

LWF

LAKE  
WINNIPEG  
FOUNDATION



Assiniboine River; Photo: Paul Mutch

SWAN LAKE  
WATERSHED DISTRICT

# 2022 regional report

LAKE WINNIPEG  
community-based monitoring network



# Table of Contents

---

Lake Winnipeg Community-Based Monitoring Network: Overview .....	1
Sample Collection & Site Map.....	2
Laboratory & Data Analysis.....	3
LWCBMN By the Numbers - 2022 .....	4
Swan Lake Watershed District .....	5
Characteristics of the 2022 Field Season.....	5
Manitoba Watershed District Map .....	6
2022 Results – Swan Lake Summary.....	7
2022 Results – Hotspot Map.....	8
2022 Results – Individual Sites.....	9
Birch River near Birch River.....	9
North Duck River at Cowan .....	11
Roaring River near Minitonas.....	13
Swan River near Minitonas .....	15
Woody River near Bowsman .....	17
Sites without capacity for load/export calculation .....	19
Swan River near Swan River.....	19
Map Sources.....	20
Drainage area polygons .....	20
Map layers .....	20

# Lake Winnipeg Community-Based Monitoring Network: Overview

---

The Lake Winnipeg Community-Based Monitoring Network (LWCBMN), coordinated by the Lake Winnipeg Foundation (LWF), mobilizes citizens and watershed partners to collect water samples across Manitoba in order to measure phosphorus concentration. Phosphorus is the nutrient responsible for blue-green algae blooms on Lake Winnipeg. Phosphorus comes from diverse sources across the watershed, including municipal wastewater and agricultural runoff.

Different sub-watersheds contribute different proportions of Lake Winnipeg’s total phosphorus load. With the help of a strong network of watershed partners and citizen scientists, this long-term monitoring program is identifying phosphorus hotspots – localized areas that contribute higher amounts of phosphorus to waterways than other areas. Targeting actions to reduce phosphorus loading in hotspots will reduce the amount of phosphorus entering Manitoba’s lakes and rivers, and improve the health of Lake Winnipeg.

Snow melts, floods and heavy rainfall events are responsible for most of the phosphorus that is flushed from the land and carried into our waterways. LWCBMN samples frequently throughout the season, and particularly during the spring melt, to ensure we capture phosphorus runoff during these high-water events.

Most LWCBMN sampling is conducted at stations where water flow is continuously monitored by the [Water Survey of Canada](#) (WSC). By tracking flow online using the WSC’s real-time data, the network can notify partners and citizen scientists across the watershed to ensure frequent sampling during peak flows. Sampling at these stations provides corresponding real-time flow data, allowing LWCBMN data to be used to calculate **phosphorus loads**. We need several samples throughout the season, corresponding to changes in flow, to accurately calculate these loads. Phosphorus loads can subsequently be used to calculate **phosphorus export**, based on the area of the watershed.

---

**Phosphorus load** is the total amount of phosphorus flowing past a sample site over a given period of time, expressed as tonnes per year.

---



---

**Phosphorus export** is the amount of phosphorus exported by each hectare of land in a year, expressed as kg/ha/y.

---

# Sample Collection & Site Map

Water samples are collected using a weighted sampling device that collects source water directly into a 500 mL Nalgene polyethylene bottle. The sampling device is lowered into the water just before it hits the bottom, the bottle is filled, then brought back to the surface. It is rinsed three times prior to sample collection. Next, a 60 mL Nalgene polyethylene bottle containing 1 mL 4N H<sub>2</sub>SO<sub>4</sub> is filled with whole water from the collection bottle.

In 2022, 1680 unfiltered water samples were collected and analyzed from 116 sites. Of these 116 LWCBMN sampling sites, 92 are located near flow-metered WSC stations, five are located near non-flow-metered WSC stations, four are located near Ontario Power Generation sites, two are located near Manitoba Hydro sites, one is located near a USGS station, and twelve are not located near any stations.

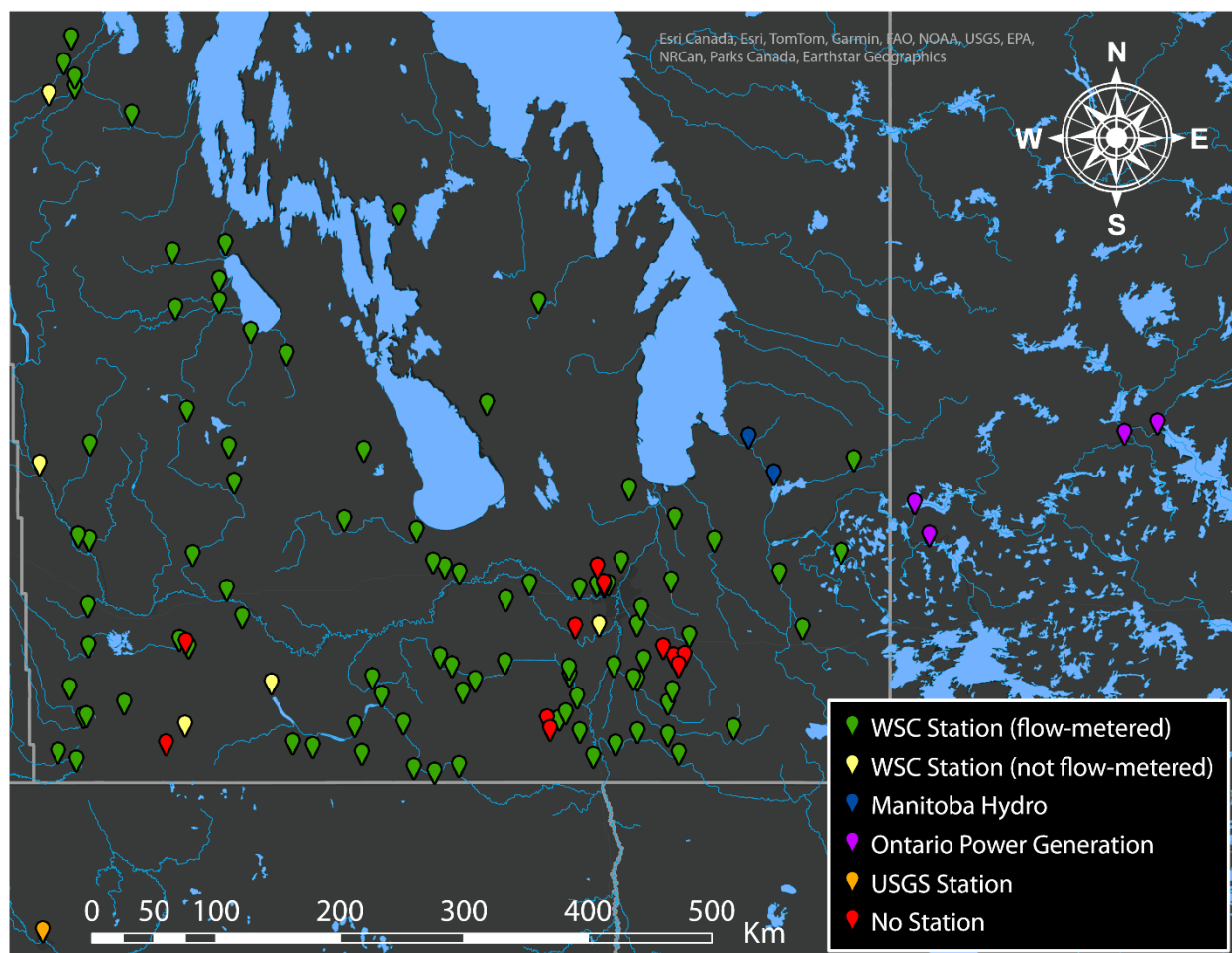


Figure 1: Map of LWCBMN sampling sites in 2022. Locations shown provided at least one sample. Colours indicate nearby station type.

# Laboratory & Data Analysis

---

LWCBMN water samples are analysed for total phosphorus concentration. The analysis of a sample for total phosphorus (TP) is a two-step procedure involving first the chemical digestion/conversion of all P forms to orthophosphate ( $\text{PO}_4^{3-}$ ) followed by the analysis of the concentration of  $\text{PO}_4^{3-}$ . The digestion procedure is patterned after USGS [Water-Resources Investigations Report 03-4174](#). The concentration of  $\text{PO}_4^{3-}$  in the sample was determined following [Murphy & Riley \(1962\)](#). The result of this analytical method is determination of unfiltered total phosphorus in mg/L.

Laboratory analysis on LWCBMN water samples was conducted in partnership with Dr. Nora Casson at her laboratory at the University of Winnipeg. Quality assurance of laboratory methods for the determination of total phosphorus was completed on samples sent from [Proficiency Testing Canada](#). Proficiency testing allows us to assess the quality of our results as compared to the results of other laboratories across the country. We received an excellent passing grade of 92/100 (with anything over 70/100 considered “passing”) on our laboratory analysis method in November 2023.

To generate total phosphorus loads and exports, total phosphorus data is linearly interpolated between sample points. Additionally, the chronologically first and last measurements of total phosphorus in a given year at a given site are duplicated and extended to the boundaries of real-time flow data (i.e., if the last stream sample was taken on October 1, but real-time flow data ends October 31, the total phosphorus concentration of October 1 is copied and pasted from October 1 – 31).

# LWCBMN By the Numbers - 2022

Table 1: Summary of 2022 LWCBMN sampling activity by region.

Region	Number of sites	Number of samples	Site with highest regional total phosphorus (TP) export (kg/ha/y)	Mean % of spring* water load	Mean % of spring* TP load
Assiniboine West	10	170	Little Saskatchewan River near Minnedosa (0.44)	58.63	60.54
Central Assiniboine	2	48	Cypress River near Bruxelles (1.37)	87.85	80.32
City of Winnipeg	5	103	Omand's Creek near Empress Street (1.45)	87.84	91.60
East Interlake	3	24	Netley Creek near Petersfield (0.91)	67.88	81.05
Inter-Mountain	7	110	Ochre River near Ochre River (2.72)	66.73	77.45
Northeast Red	4	34	Devil's Creek near Libau (1.31)	63.71	68.56
Pembina Valley	16	216	Rivière aux Marais near Christie (3.22)	80.87	83.45
Redboine	15	195	South Tobacco Creek near Miami (3.99)	80.86	84.10
Souris River	13	122	Elgin Creek near Souris (0.26)	63.41	54.70
Seine Rat Roseau	19	333	Joubert Creek at St-Pierre-Jolys (2.74)	70.73	74.38
Swan Lake	6	90	Birch River near Birch River (0.83)	79.69	92.88
West Interlake	2	39	Burnt Lake Drain Northwest of Lundar (0.077)	19.56	17.44
Whitemud	4	54	Big Grass River near Glenella (0.78)	59.70	56.13
Winnipeg River	10	142	Winnipeg River at McArthur Generating Station (2.50)	33.44	36.35

\*LWCBMN defines "Spring" as March 1 to May 31, inclusive.

# Swan Lake Watershed District

---

Established in 2006, Swan Lake Watershed District (SLWD) covers an area of approximately 7,199 km<sup>2</sup> and is located on the western edge of Manitoba, between the Saskatchewan border to the west and Swan Lake and Lake Winnipegosis to the east. SLWD is home to about 10,000 residents and contains the town of Swan River, and municipalities of Mountain, Swan Valley West and Minitonas-Bowman. SLWD contains two main, roughly parallel rivers, Woody River and Swan River, both originating from Saskatchewan and flowing eventually into Swan Lake, located along the Swan River Valley. SLWD is highly topographically diverse, experiencing an elevation range of 533 m, which spans the lows of the Swan River Valley to the highs of the Porcupine Hills and Duck Mountains. In addition to agricultural activities, wastewater treatment plants and lagoons in municipalities throughout SLWD contribute phosphorus to local waterways.

In partnership with LWCBMN, SLWD staff sampled 6 sites in the SLWD region, of which all were located near actively monitored WSC flow meters.

[SLWD Website \(swanlakewatershed.ca/\)](http://swanlakewatershed.ca/)

[SLWD Integrated Watershed Management Plan](#)

[swanlakewatershed.ca/uploads/1/3/0/0/130039784/swan\\_lake\\_iwmp.pdf](http://swanlakewatershed.ca/uploads/1/3/0/0/130039784/swan_lake_iwmp.pdf)

## Characteristics of the 2022 Field Season

---

The 2022 field season was historically wet. The winter of 2021-2022 provided most of southern Manitoba with 150+ cm of snow, the third highest amount of snowfall since 1872. Additionally, record precipitation in April and May saw large amounts of rain and snow falling on mostly frozen, impermeable soils. Specifically, in the month of April, southern Manitoba and the US portion of the Red River watershed received 400-600% of their normal precipitation (120-160 mm). Flooding was a huge issue across the southern part of the province, where almost all LWCBMN sites are located. The mean peak discharge date across all LWCBMN sites with analyzed water samples was May 10, 2022 (with a standard deviation of 19 days). In 2022, an average of 65.83% of stream discharge occurred in the spring (March 1 – May 31) across LWCBMN sites (with a standard deviation of 21.10%). During the period of extreme flooding, safety concerns prevented sampling from occurring at some sites. As a result, some load/export calculations may be less accurate than they would be had sampling remaining frequent during these times.

# Manitoba Watershed District Map

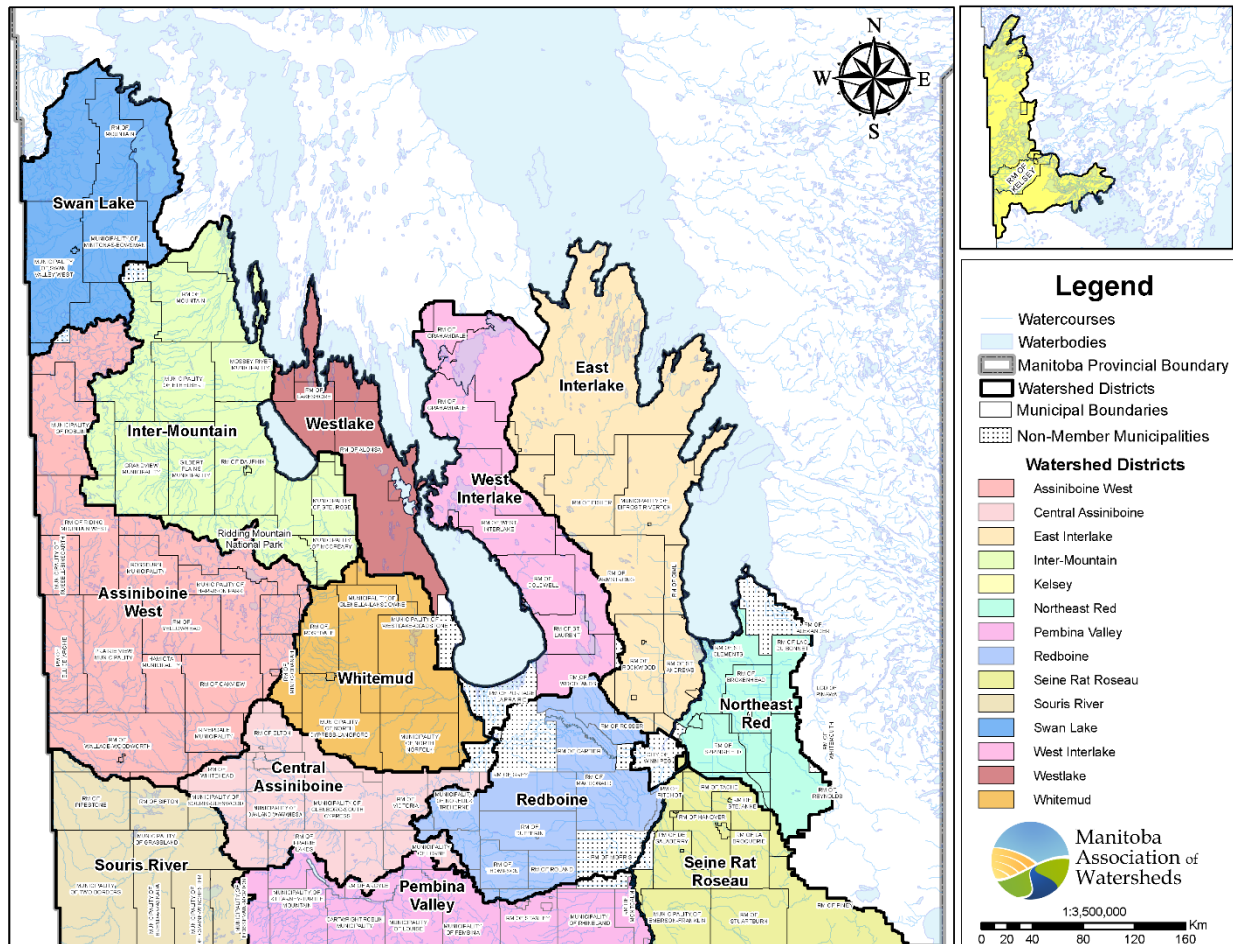


Figure 2: Manitoba Watershed District Boundaries. There are 14 total watershed districts, with 12 of 14 participating in LWCBMN (all but Kelsey & Westlake). Map provided by Manitoba Association of Watersheds (updated July 2022).



# 2022 Results – Swan Lake Summary

Table 2: Summary of 2022 LWCBMN results in Swan Lake Watershed District. Letters correspond to drainage areas in Figure 3. Data shown represents sites with sampling efforts adequate enough to calculate loads/exports.

	Site Name	WSC Station	GDA (km <sup>2</sup> )	IDA (km <sup>2</sup> )	Gross/ Incr.	TP load (tonnes/y)	TP export (kg/ha/y)
<b>A</b>	Birch River near Birch River	05LE010	135.73	NA	gross	11.29	0.83
<b>B</b>	North Duck River at Cowan	05LG004	229.41	NA	gross	8.21	0.36
<b>C</b>	Roaring River near Minitonas	05LE005	861.61	NA	gross	45.83	0.53
<b>D</b>	Swan River near Minitonas	05LE006	4209.28	NA	gross	88.10	0.21
<b>E</b>	Woody River near Bowsman	05LE004	2139.33	NA	gross	41.34	0.19

To compare 2022 results to other years of data, please see the LWCBMN regional reports attached to the LWCBMN dataset (<https://datastream.org/en-ca/dataset/f10bb610-63cc-46c1-81b1-74a6b0310655>) which resides in Lake Winnipeg DataStream (<https://lakewinnipegdatastream.ca/explore/#/dataset/f10bb610-63cc-46c1-81b1-74a6b0310655/>).

# 2022 Results – Hotspot Map

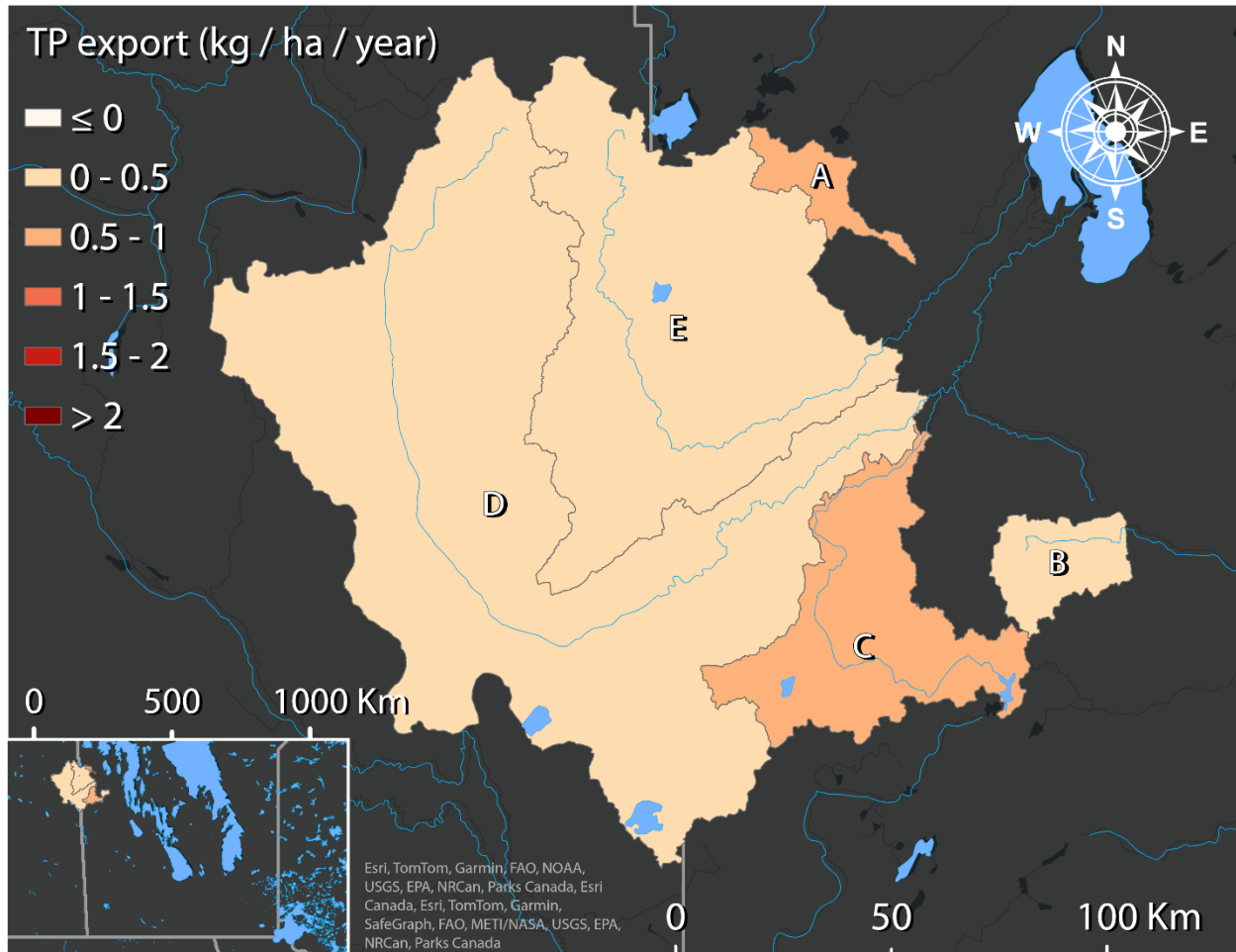


Figure 3: 2022 LWCBMN TP Export Hotspots in Swan Lake Watershed District. Letters correspond to sites listed in Table 2.

# 2022 Results – Individual Sites

## Birch River near Birch River

Birch River flows east into Woody River and then into Swan Lake. This sampling site is located at Water Survey of Canada flow meter 05LE010. The sampling effort provided adequate coverage to calculate TP loads and exports.

Table 3: Indices of discharge and phosphorus from the gross drainage area of Birch River near Birch River (05LE010) in 2022.

<b>Gross drainage area:</b>	135.73 km <sup>2</sup>
<b>Peak discharge:</b>	16.97 m <sup>3</sup> s <sup>-1</sup> (2022-05-15)
<b>Peak TP concentration:</b>	1.22 mg/L (2022-05-17)
<b>% of water load in spring:</b>	88.10%
<b>% of TP load in spring:</b>	90.07%
<b>Water load:</b>	0.033 km <sup>3</sup> y <sup>-1</sup>
<b>TP load:</b>	11.29 tonnes P y <sup>-1</sup>
<b>Water export:</b>	240.94 mm y <sup>-1</sup>
<b>TP export:</b>	0.83 kg P ha <sup>-1</sup> y <sup>-1</sup>

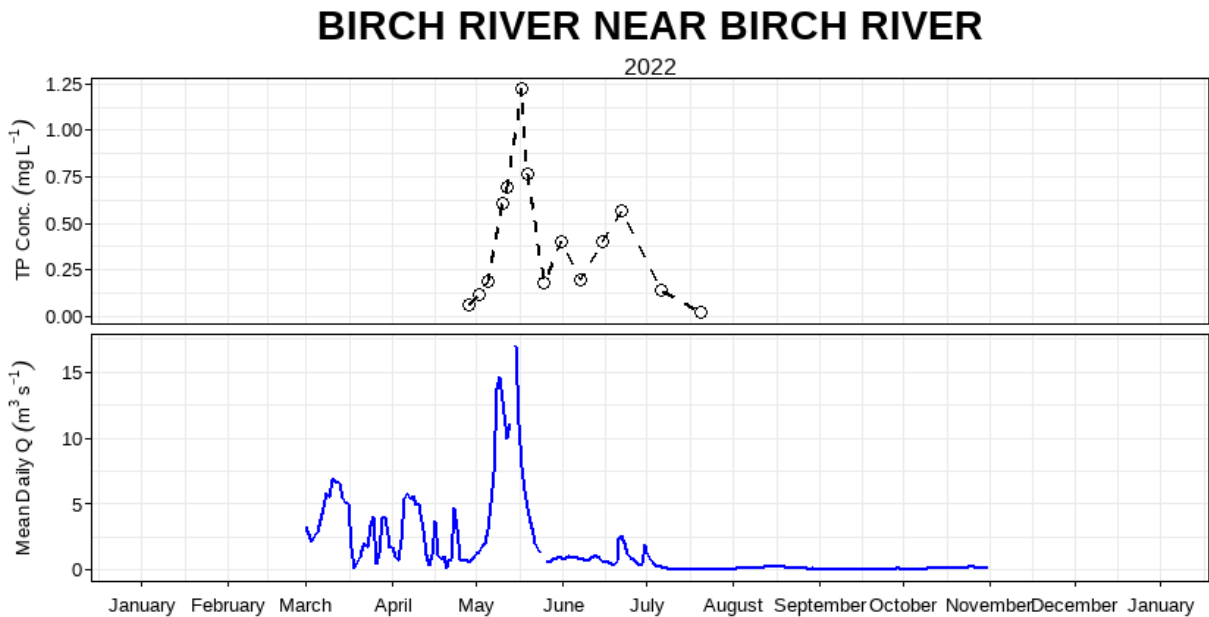


Figure 4: Mean daily discharge (m<sup>3</sup> s<sup>-1</sup>) and total phosphorus concentration (mg L<sup>-1</sup>) over the 2022 sampling season at Birch River near Birch River (05LE010).

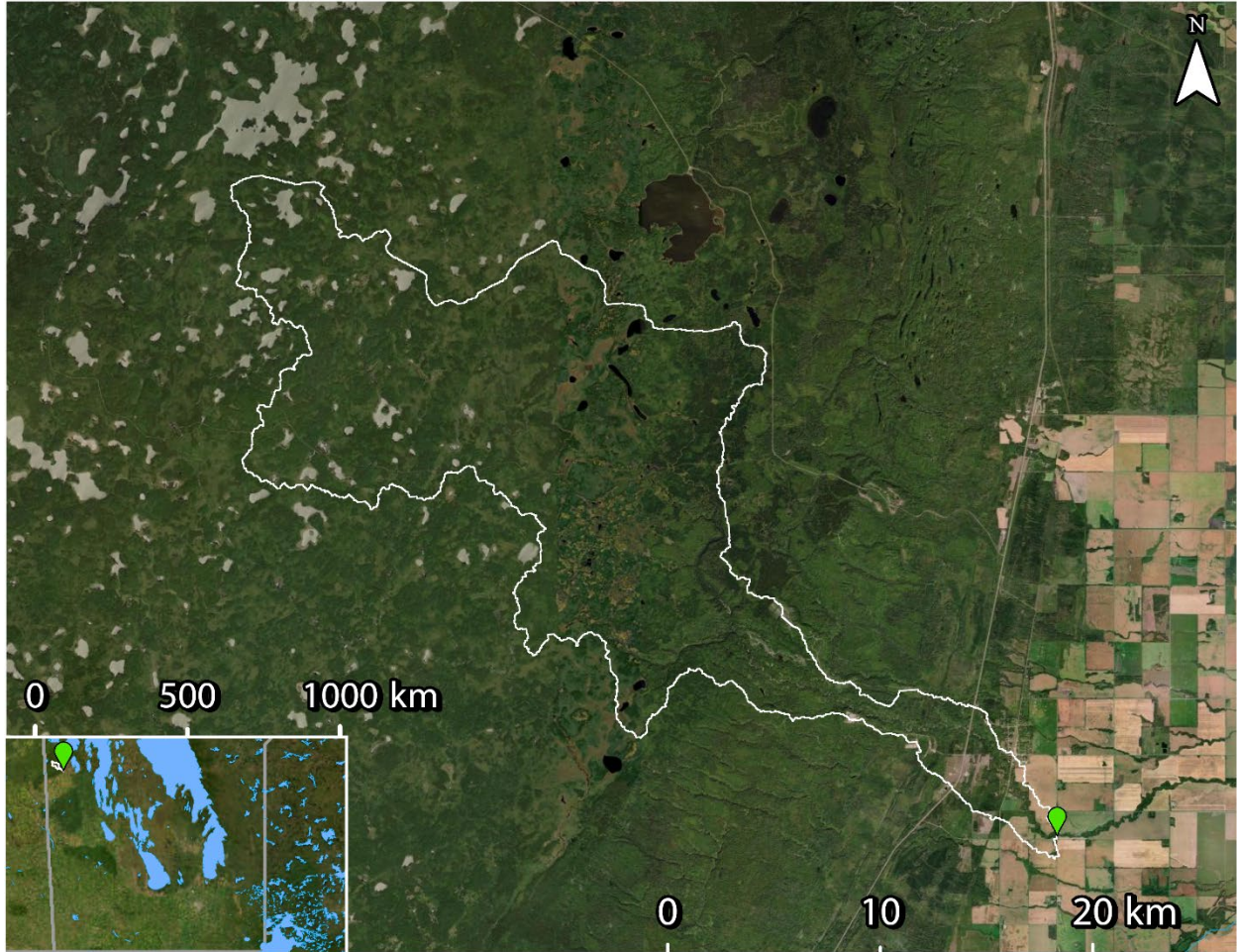


Figure 5: WSC station 05LE010 (green) and drainage area polygon (white - source: WSC). LWCBMN samples directly at the WSC station.

## North Duck River at Cowan

Woody River flows northeast into Lake Winnipegosis. This sampling site is located at Water Survey of Canada flow meter 05LG004. The sampling effort provided excellent coverage to calculate TP loads and exports.

Table 4: Indices of discharge and phosphorus from the gross drainage area of North Duck River at Cowan (05LG004) in 2022.

<b>Gross drainage area:</b>	229.41 km <sup>2</sup>
<b>Peak discharge:</b>	59.00 m <sup>3</sup> s <sup>-1</sup> (2022-05-08)
<b>Peak TP concentration:</b>	0.37 mg/L (2022-05-05)
<b>% of water load in spring:</b>	77.93%
<b>% of TP load in spring:</b>	93.98%
<b>Water load:</b>	0.051 km <sup>3</sup> y <sup>-1</sup>
<b>TP load:</b>	8.21 tonnes P y <sup>-1</sup>
<b>Water export:</b>	223.13 mm y <sup>-1</sup>
<b>TP export:</b>	0.36 kg P ha <sup>-1</sup> y <sup>-1</sup>

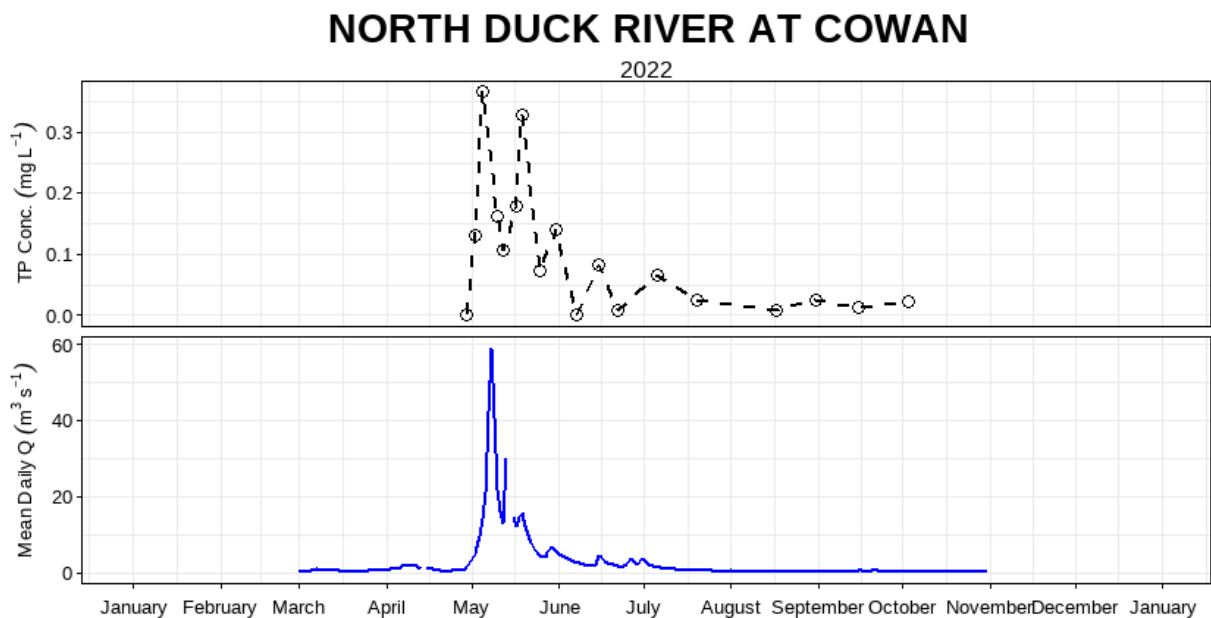


Figure 6: Mean daily discharge (m<sup>3</sup> s<sup>-1</sup>) and total phosphorus concentration (mg L<sup>-1</sup>) over the 2022 sampling season at North Duck River at Cowan (05LG004).

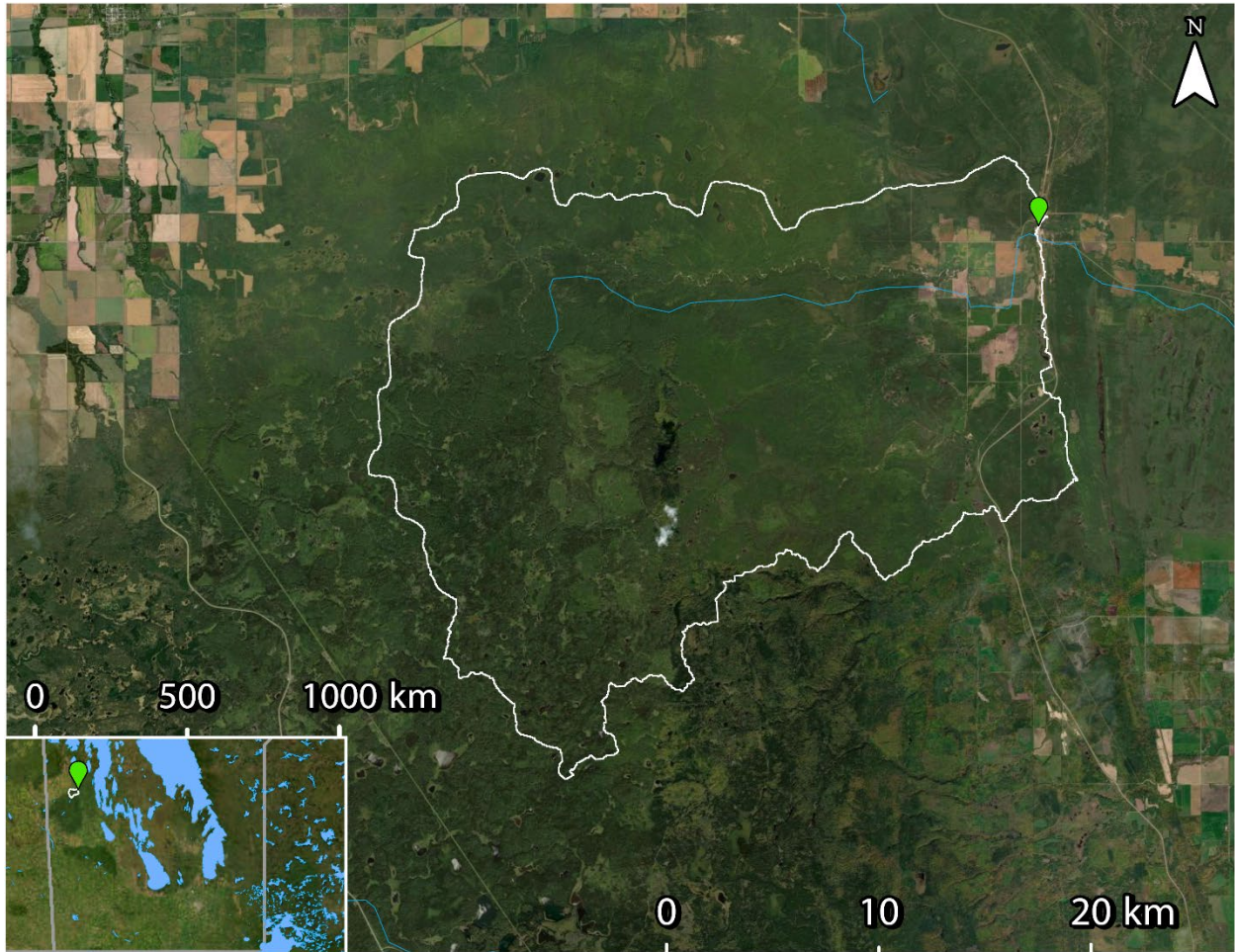


Figure 7: WSC station 05LG004 (green) and drainage area polygon (white – source: WSC). LWCBMN samples directly at the WSC station.

## Roaring River near Minitonas

Roaring River flows northeast into Swan Lake. This sampling site is located at Water Survey of Canada flow meter 05LE005. The sampling effort provided excellent coverage to calculate TP loads and exports.

Table 5: Indices of discharge and phosphorus from the gross drainage area of Roaring River near Minitonas (05LE005) in 2022.

<b>Gross drainage area:</b>	861.61 km <sup>2</sup>
<b>Peak discharge:</b>	58.92 m <sup>3</sup> s <sup>-1</sup> (2022-05-16)
<b>Peak TP concentration:</b>	0.86 mg/L (2022-05-17)
<b>% of water load in spring:</b>	81.28%
<b>% of TP load in spring:</b>	93.82%
<b>Water load:</b>	0.11 km <sup>3</sup> y <sup>-1</sup>
<b>TP load:</b>	45.83 tonnes P y <sup>-1</sup>
<b>Water export:</b>	132.55 mm y <sup>-1</sup>
<b>TP export:</b>	0.53 kg P ha <sup>-1</sup> y <sup>-1</sup>

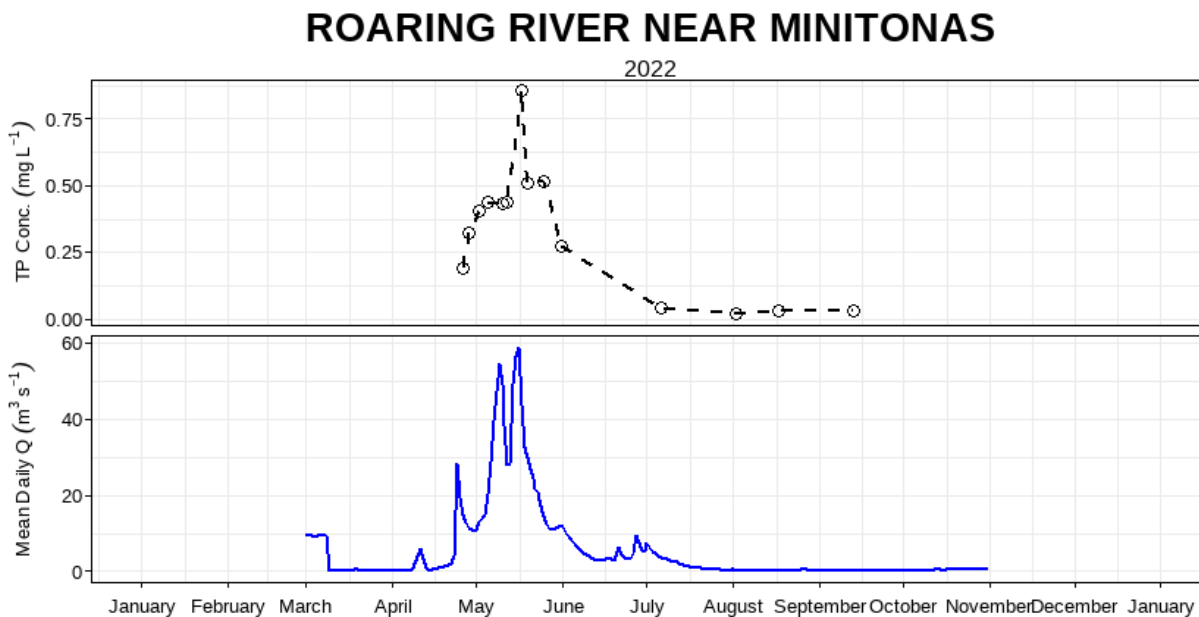


Figure 8: Mean daily discharge (m<sup>3</sup> s<sup>-1</sup>) and total phosphorus concentration (mg L<sup>-1</sup>) over the 2022 sampling season at Roaring River near Minitonas (05LE005).

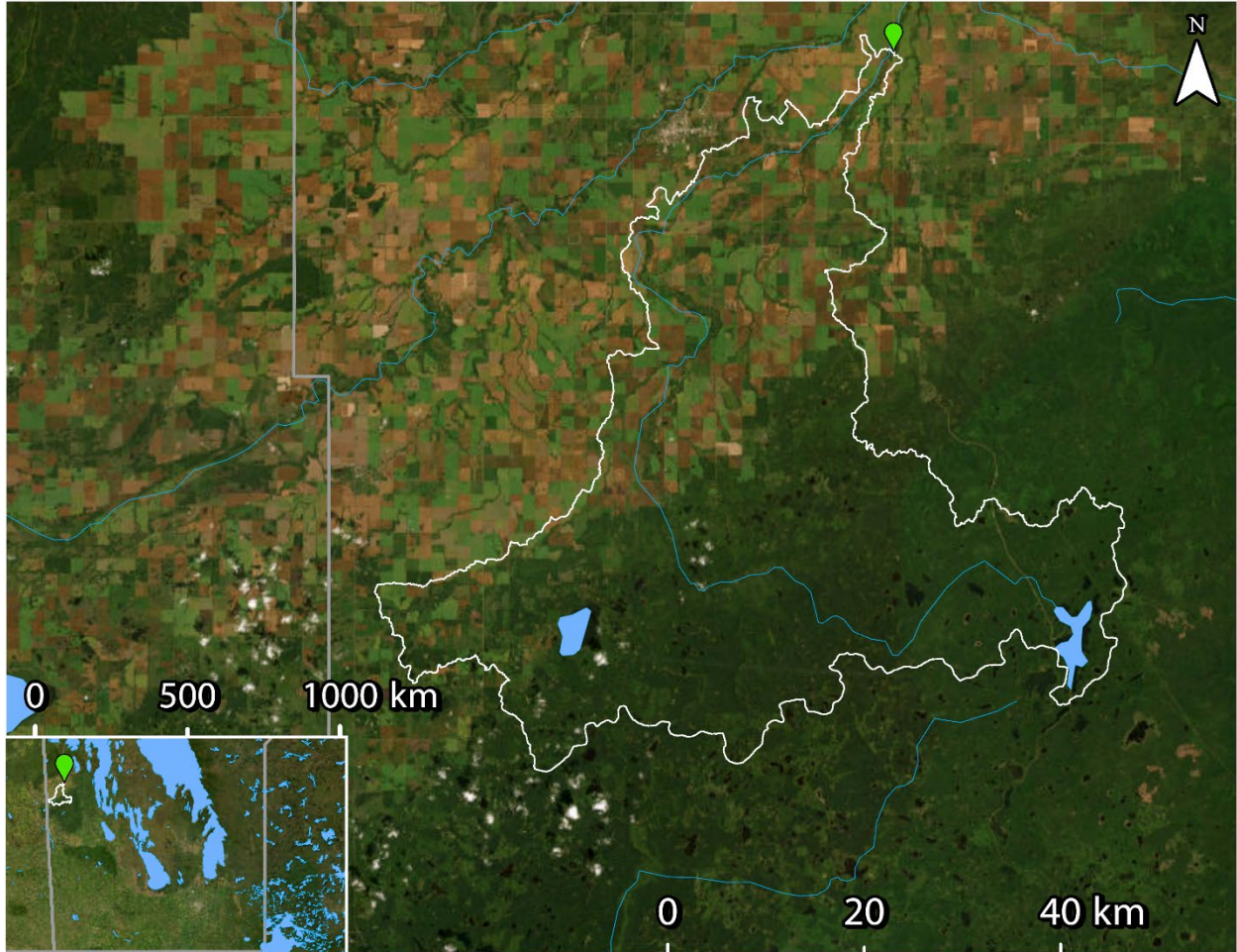


Figure 9: WSC station 05LE005 (green) and drainage area polygon (white – source: WSC). LWCBMN samples directly at the WSC station.



## Swan River near Minitonas

Swan River flows northeast into Swan Lake. This sampling site is located at Water Survey of Canada flow meter 05LE006. The sampling effort provided adequate coverage to calculate TP loads and exports.

Table 6: Indices of discharge and phosphorus from the gross drainage area Swan River near Minitonas (05LE006) in 2022.

<b>Gross drainage area:</b>	4209.29 km <sup>2</sup>
<b>Peak discharge:</b>	89.92 m <sup>3</sup> s <sup>-1</sup> (2022-05-03)
<b>Peak TP concentration:</b>	0.56 mg/L (2022-05-02)
<b>% of water load in spring:</b>	77.56%
<b>% of TP load in spring:</b>	92.58%
<b>Water load:</b>	0.27 km <sup>3</sup> y <sup>-1</sup>
<b>TP load:</b>	88.10 tonnes P y <sup>-1</sup>
<b>Water export:</b>	63.33 mm y <sup>-1</sup>
<b>TP export:</b>	0.21 kg P ha <sup>-1</sup> y <sup>-1</sup>

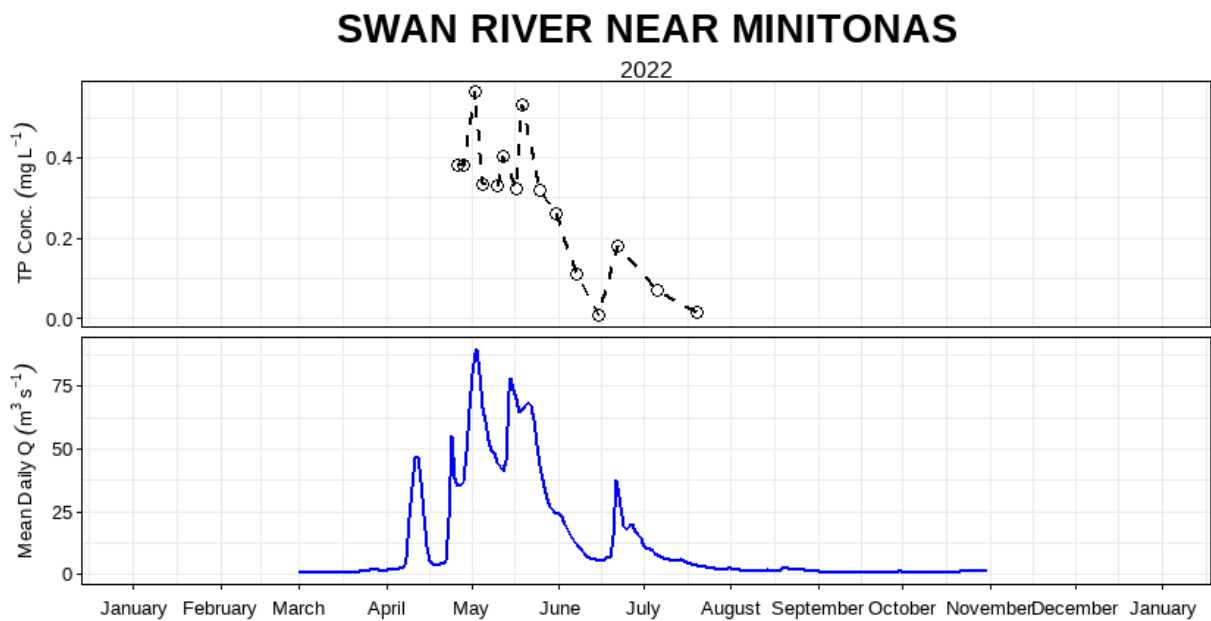


Figure 10: Mean daily discharge (m<sup>3</sup> s<sup>-1</sup>) and total phosphorus concentration (mg L<sup>-1</sup>) over the 2022 sampling season at Swan River near Minitonas (05LE006).

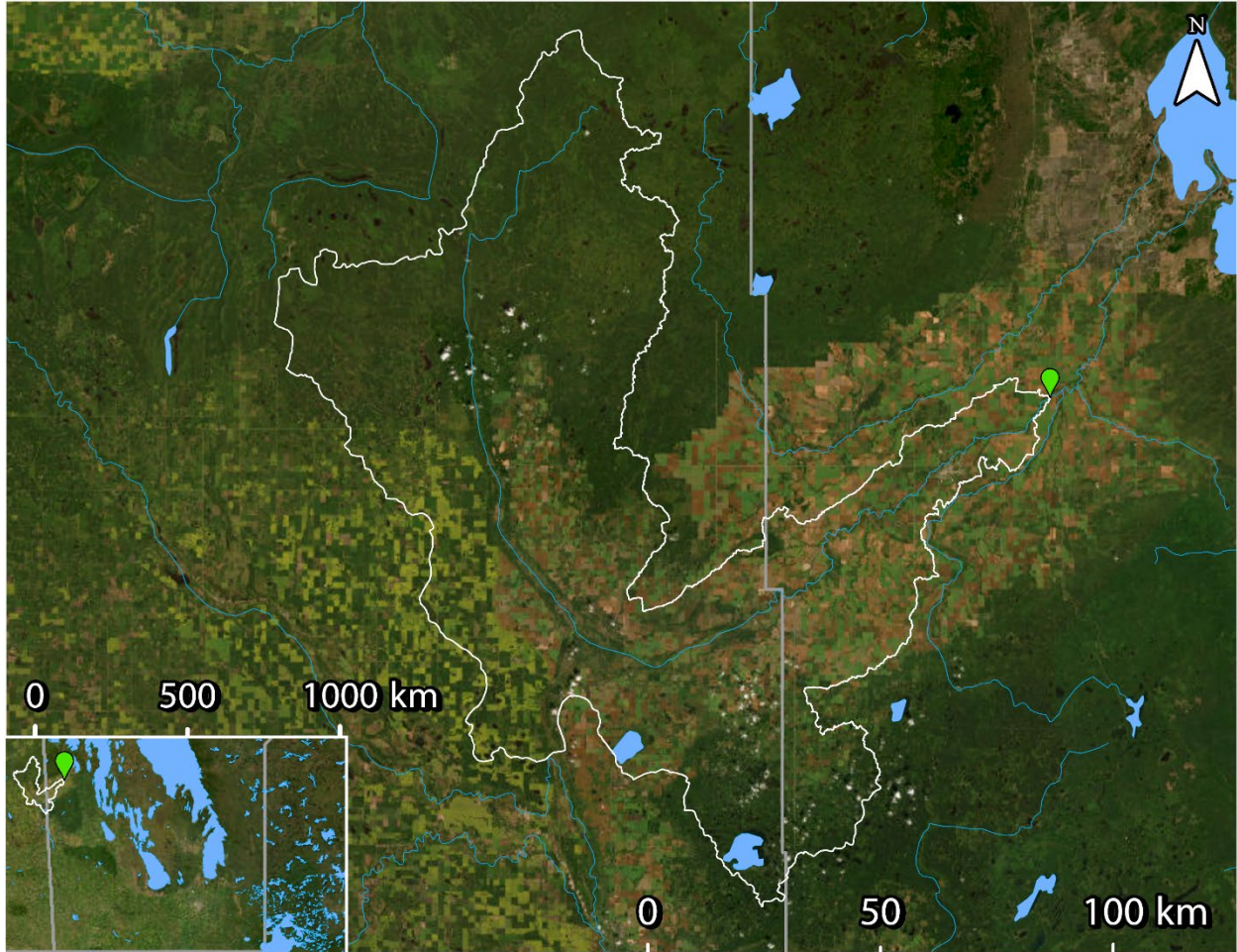


Figure 11: WSC station 05LE006 (green) and drainage area polygon (white – source: WSC). LWCBMN samples directly at the WSC station.

## Woody River near Bowsman

Woody River flows northeast into Swan Lake. This sampling site is located at Water Survey of Canada flow meter 05LE004. The sampling effort provided adequate coverage to calculate TP loads and exports.

Table 7: Indices of discharge and phosphorus from the gross drainage area of Woody River near Bowsman (05LE004) in 2022.

<b>Gross drainage area:</b>	2139.33 km <sup>2</sup>
<b>Peak discharge:</b>	87.18 m <sup>3</sup> s <sup>-1</sup> (2022-05-15)
<b>Peak TP concentration:</b>	0.53 mg/L (2022-05-10)
<b>% of water load in spring:</b>	73.58%
<b>% of TP load in spring:</b>	93.96%
<b>Water load:</b>	0.17 km <sup>3</sup> y <sup>-1</sup>
<b>TP load:</b>	41.34 tonnes P y <sup>-1</sup>
<b>Water export:</b>	80.34 mm y <sup>-1</sup>
<b>TP export:</b>	0.19 kg P ha <sup>-1</sup> y <sup>-1</sup>

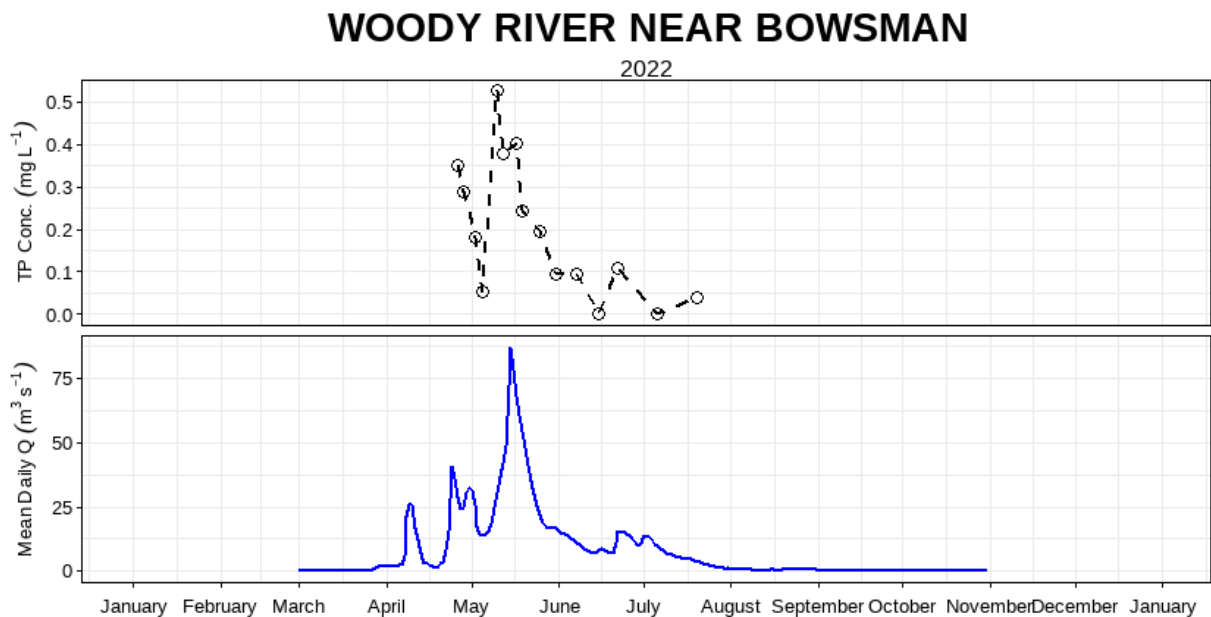


Figure 12: Mean daily discharge (m<sup>3</sup> s<sup>-1</sup>) and total phosphorus concentration (mg L<sup>-1</sup>) over the 2022 sampling season at Woody River near Bowsman (05LE004).

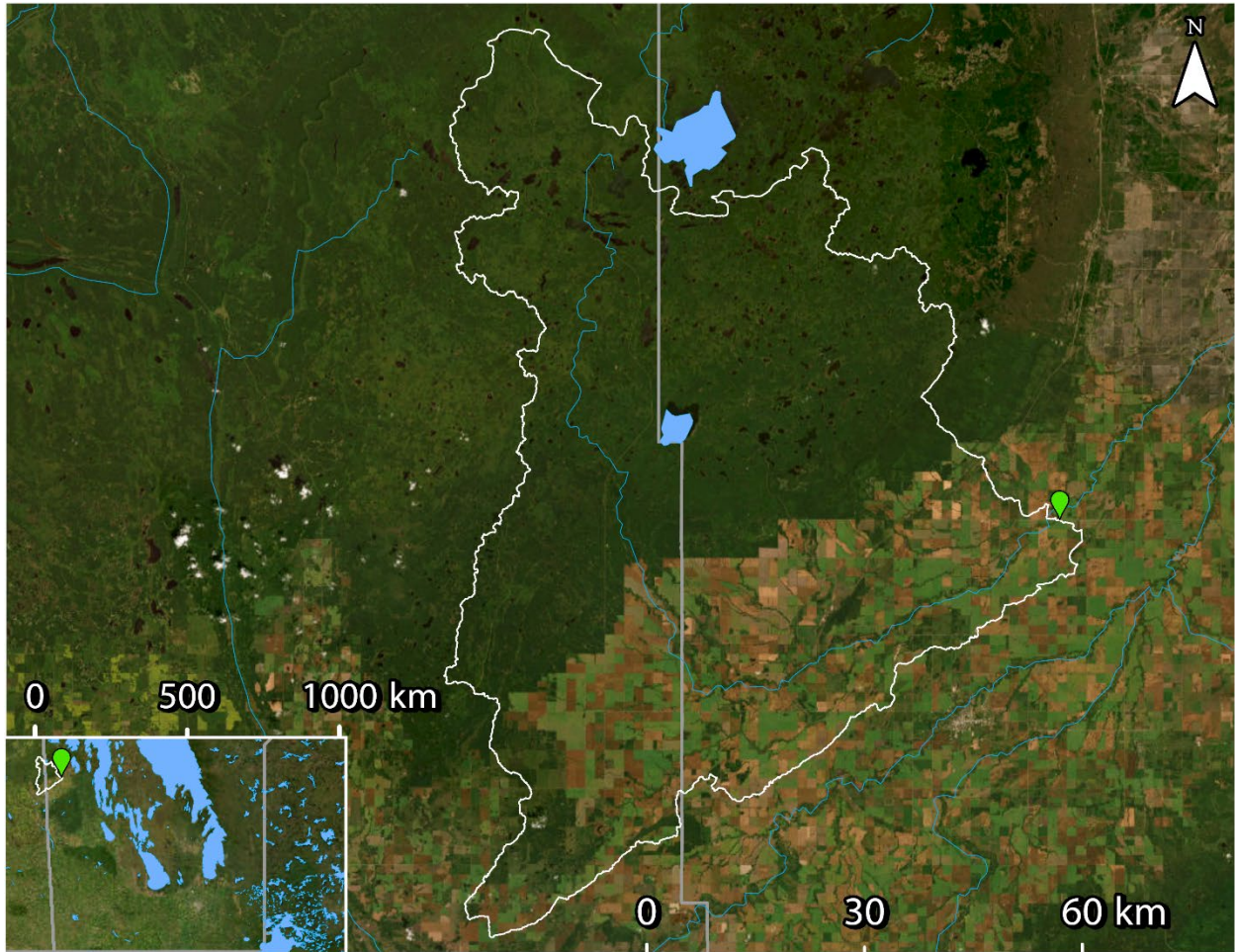


Figure 13: WSC station 05LE004 (green) and drainage area polygon (white - source: WSC). LWCBMN samples directly at the WSC station.

# Sites without capacity for load/export calculation

## Swan River near Swan River

Swan River flows northeast into Swan Lake. This sampling site is located at Water Survey of Canada flow meter 05LE001. Flow is not measured at this site so loads and exports cannot be calculated.

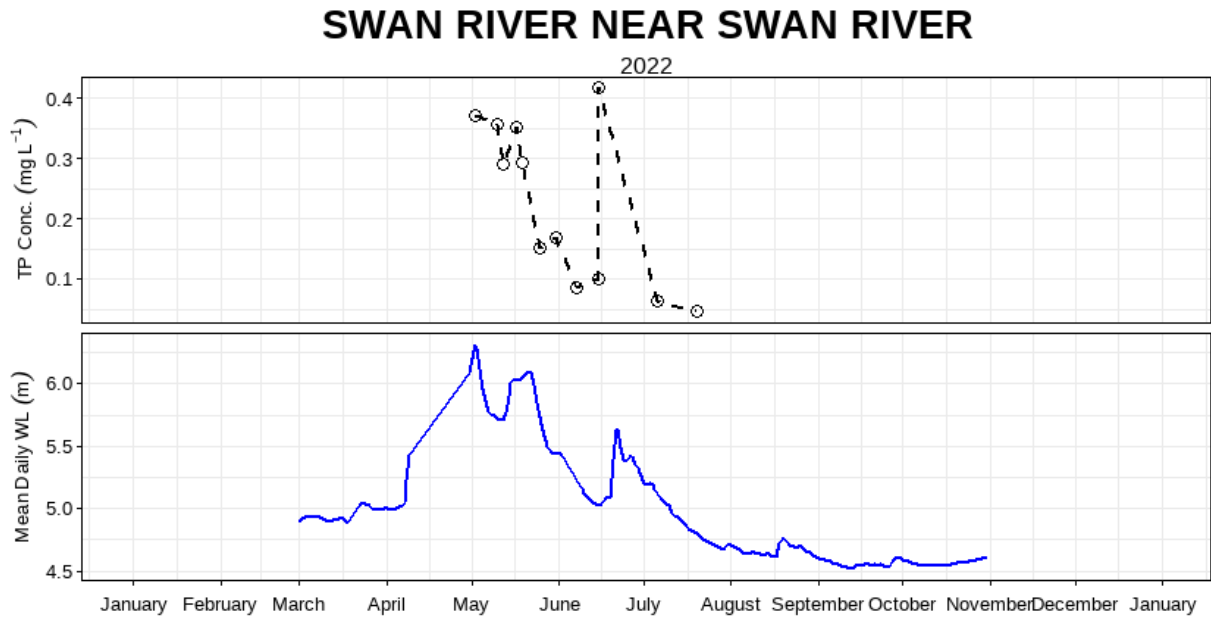


Figure 14: Mean daily water level (m) and total phosphorus concentration (mg L<sup>-1</sup>) over the 2022 sampling season at Swan River near Swan River (05LE001).

# Map Sources

---

## Drainage area polygons

Primarily, and whenever possible, drainage area polygons were taken from the Water Survey of Canada's (WSC) National Hydrometric Network Basin Polygons. Released on July 15, 2022, this prerelease version of the dataset contains drainage area polygons for over 7300 of the 7896 active and discontinued WSC stations. According to WSC, this dataset will continue to be updated as new polygons are added. For our analysis, we used drainage areas from this dataset.

Link: <https://catalogue.ec.gc.ca/geonetwork/srv/eng/catalog.search#/metadata/0c121878-ac23-46f5-95df-eb9960753375>

Secondarily, when no WSC drainage area polygons were available, or when it was necessary to enable accurate incremental calculations, we used drainage area polygons from the Total Gross Drainage Areas of the Agriculture and Agri-Food Canada (AAFC)'s Watersheds Project – 2013

Link: <https://open.canada.ca/data/en/dataset/67c8352d-d362-43dc-9255-21e2b0cf466c>

Due to the required use of drainage area polygons from two different datasets, some polygons may slightly overlap. Hotspot maps, as a result, have a few instances where a drainage area is visually cut off. However, most of these instances are very minor, and we display all watersheds in their full extent on each sampling site's individual section.

## Map layers

Satellite imagery used in all maps is from the World Imagery map layer (Source: Esri, Maxar, Earthstar Geographics, and the GIS User Community). World Imagery provides one meter or better satellite and aerial imagery in many parts of the world and lower resolution satellite imagery worldwide.

Lake and river map data used in all maps is from North America Environmental Atlas (Lakes, Rivers). The North American Environmental Atlas – Lakes & Rivers datasets display area hydrographic features (Lakes: major lakes and reservoirs; Rivers: major rivers, streams, and canals) of North America at a reference spatial scale of 1:1,000,000. Credits: Commission for Environmental Cooperation (CEC). 2023. "North American Atlas – Lakes and Rivers". Natural Resources Canada (NRCan), Instituto Nacional de Estadística y Geografía (INEGI), Comisión Nacional del Agua (CONAGUA), U.S. Geological Survey (USGS). Ed. 3.0, Vector digital data [1:1,000,000].

The **Lake Winnipeg Community-Based Monitoring Network** (LWCBMN) is a collaborative, long-term phosphorus monitoring program designed to identify localized phosphorus hotspots where action is required to improve Lake Winnipeg water quality. LWCBMN mobilizes citizen volunteers and watershed partners to collect water samples across Manitoba, generating robust water-quality data that is useful to community practitioners, academic researchers, government scientists and policy-makers alike. Focusing research, resources and action in phosphorus hotspots is necessary to reduce phosphorus loading to Lake Winnipeg.

LWCBMN is delivered in partnership with Manitoba's watershed districts, LWF's science advisors, volunteer citizen scientists and Dr. Nora Casson's laboratory at the University of Winnipeg. Thank you to all who make this network possible!

The **Lake Winnipeg Foundation** (LWF) advocates for change and coordinates action to improve the health of Lake Winnipeg. Combining the commitment of our grassroots membership and the expertise of our science advisors, LWF is nationally recognized for our unique capacity to link science and action. Our goal is to ensure policy and practices informed by evidence are implemented and enforced.

### LWF proudly acknowledges the following funders

This project was undertaken with the financial support of the Government of Canada.  
Ce projet a été réalisé avec l'appui financier du gouvernement du Canada.



TD Friends of the Environment Foundation

Lake Winnipeg Foundation    

107 - 62 Hargrave St, Winnipeg, MB, R3C 1N1  
Treaty 1 Territory & Homeland of the Métis Nation  
info@lakewinnipegfoundation.org | 204-956-0436